



Clubhouse Trailer Company
14625 Santa Fe Crossings Dr
Oklahoma City, Oklahoma 73013

Clubhouse Trailer Company is based in Edmond, Oklahoma and has become the leader in Marching Band transportation as the only company 100% focused on logistics and transport solutions for the Marching Arts. Over the past 9 years our products have been developed for bands throughout the U.S. The Clubhouse has proudly completed projects for numerous schools in the states of Oklahoma, Texas, Louisiana, Georgia, Arkansas, Michigan, Missouri, as well as the University of Kentucky Marching Wildcats, the TCU Horned Frog Marching Band, and even the DCI Corps The Cavaliers from Rosemont, IL. and Battalion from Salt Lake City, UT.

2019 was an incredible year for the Clubhouse, as we completed a record number of projects in our brand new, 2,400 sqft. workshop. We added 4 new states to the reach of the Clubhouse brand, as well as completed 42 projects with a higher level of quality and efficiency. As a result, Clubhouse Trailer Company was recognized as the #1 Fastest Growing Privately Held company in Central Oklahoma by the OKC Chamber of Commerce and the Journal Record. Our pace of innovation continues to quicken with new products, as well as enhancements to current products that are always on the whiteboard in the shop.

2020 shows 52 projects on the board, with a host of new states being served. In December of 2019 we attended the Midwest Clinic for the first time and were able to share The Clubhouse offering of new, exciting products and projects with some amazing music educators.

About Clubhouse Trailers

Clubhouse Trailer Company was founded in 2010 by Jeff Hadley and Drew Taylor after the successful development of "Bulldog One". This trailer represented the genesis of the idea that "there had to be a better way" to safely and efficiently transport the varied and complex needs of today's marching band. In early 2008, these two "Band Dads" set upon a 2-year effort to evaluate, design, and implement a solution to solve the needs of a growing Edmond Memorial band program which had outgrown 1 24-foot box truck, 3 enclosed trailers, and 2 open utility trailers. These gentlemen saw the inherent risks involved in loading, unloading, moving, and storing almost \$1M in performance equipment. With the vision shared by a supportive director, Jeff and Drew began to interview directors, band dads, boosters, and trailer drivers from across the Great Plains to determine things to avoid, as well as best practices to implement. The successful rollout of Bulldog One led to a Gear Up article in the May-June 2012 Issue of Halftime Magazine, as well as the building interest to replicate our design throughout the state of Oklahoma (now with 4 Clubhouse Trailer designs being seen in the lot at OBA finals on an annual basis) and more than 70+ rigs throughout the U.S.



Clubhouse Trailers Products

Clubhouse Trailers product and design philosophy is predicated on a culture of innovation and out-of-the-box thinking, which is a natural extension of the methods used by the successful marching programs we support. With the creative use of the 4,500 cubic feet within a typical 53 foot Moving Van, Clubhouse Trailers has found ways to create innovative solutions to problems plaguing most marching programs, the most critical one being the safe, effective, and efficient use of all available space. We have determined ways to maximize the available square footage based on the unique needs of each marching program, its directors and staff, the performers, and the parents, all while maintaining a sleek and polished exterior set-off with subtle design elements that flow together seamlessly.

Entry and Stair Systems



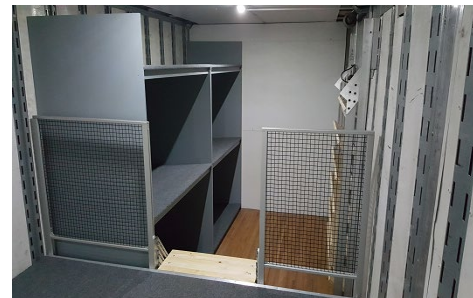
Full-Width Hydraulic Ramps, a Clubhouse Trailers Innovation



12-Volt Power Systems and LED Lighting



Custom Cabinets and Shelving



Custom Bumper Covers



Integrated Shelves for Sousaphone Cases with Additional Space Above



Color Guard Drawers



Rooftop Solar Panels



Director's Perch



High Quality Digitally Printed Graphics



Retracting Interior Stairs



Flying Carpet Interior Moving Floor



The Clubhouse Trailers Process

Process is core to Clubhouse Trailers' success. From project inception to delivery, The Clubhouse has created a culture of constant improvement, innovation, and efficiency throughout our team. The process begins during the consultation phase to understand the nuanced needs of each program, the staff, and the community at-large. During the conceptual phase the Clubhouse team engages with key stakeholders to work within budget, time, and process constraints in order to develop a highly-usable and efficient solution to meet the specific needs of each program. We identify and source each gently-used trailer carefully, as this critical foundation must provide for many years of use and pride for the students, faculty, staff, and parents. We work exclusively with a trailer broker, located in the Midwest, with access to a nationwide inventory of trailers in a variety of configurations in order to meet each distinct need. Each trailer must be DOT certified and all key systems are brought up to a high standard regulated by the U.S. Department of Transportation according to Volume 5, Chapter III, Subchapter B, Appendix G of the Title 49 Transportation Federal Regulation standard. Each trailer is specifically selected to match the needs of a program's design and functionality. Typically, either Jeff or Drew will meet with representatives to understand the need, direction, and approach of each unique program to design a finished project that suits the current and future needs, as well as aligning to budgetary guidelines. Upon finalization of the design, our broker identifies the right trailer asset and completes any necessary refurbishments. Once each trailer is sourced and delivered to the Clubhouse, team members will coordinate with our paint and graphics partner to execute on the shared vision of each community showpiece, as this billboard for each school becomes a key component of community pride and goodwill between the district and the communities you serve. Paint and graphic processes include:

- Careful and thorough surface prep
- Powerful single-stage paint applied in a climate-controlled EPA regulated paint booth
- Durable 3M vinyl graphics produced by a G7 Master Printer 3M™ with MCS™ Warranty

We then begin fabrication, installation, and testing of all systems to ensure the highest quality and functionality for repeated use. Our production materials include:

- High-grade aluminum extrusions and components
- Precision machined fittings, plates, and components
- Hydraulic systems specifically engineered for our unique mobile applications
- Prime-Grade lumbers and plywood
- Industry-standard shoring-bars utilizing the e-track system within each trailer
- Industry-standard 12-volt power systems including batteries, LED lighting and power distribution systems
- Commercial grade carpet
- Low VOC paints, stains, and varnishes



Clubhouse Trailers Terms

Clubhouse Trailer Company is proud to operate as a zero-debt business. This, combined with our nationwide scope and high demand, has created a very specific set of terms used to schedule time for your project in our shop. Upon initiating a project with Clubhouse Trailers, we ask for a deposit of 60% to place your project on our calendar. Shop time is scheduled on a first-deposit, first-reserved basis and we are currently accepting deposit reservations for late into the 2020 build calendar.

Payment Terms are as follows:

60% due upon issuance of the PO Net-30 days (EFT or paper check)

25% invoiced upon build start Net-30 days

15% + any change orders due Net-30 days invoiced upon delivery



Where are Clubhouse Trailers

Oklahoma	Texas		Louisiana
Edmond Memorial HS Bartlesville HS Bixby HS Stillwater HS University of Oklahoma Football Edmond Santa Fe HS	Killeen HS Shoemaker HS Ellison HS Harker Heights HS North Lamar HS John Horn HS North Mesquite HS Poteet HS Mesquite HS West Mesquite HS Red Oak HS Abilene Wylie HS McKinney Boyd HS McKinney HS McKinney North HS Vandegrift HS Mercedes HS Alvin Manvel HS Boswell HS Crandall HS Pflugerville Connally HS Pflugerville HS Oak Ridge HS Vista Ridge HS Keller HS	Lake Dallas HS Magnolia HS Magnolia West HS White Settlement HS BF Terry HS Foster HS Fulshear HS Lamar Consolidated HS George Ranch HS Allen HS (2 trailers) Mt Pleasant HS Texas Christian University Wylie East HS Wylie High School Hays Lehman HS Hays Johnson HS Cy-Fair HS Jersey Village HS Cypress Creek HS Langham Creek HS Cypress Springs HS Cypress Falls HS Cypress Woods HS Cypress Ridge HS Porter HS New Caney HS	West Monroe HS Georgia Coffee HS North Forsyth HS White County HS Illinois The Cavaliers (DCI) (2 Trailers) Kentucky University of Kentucky Utah Battalion Dum Corps (DCI) Michigan Vicksburg High School Missouri Mizzou Football Arkansas Van Buren HS

